

The Black Death



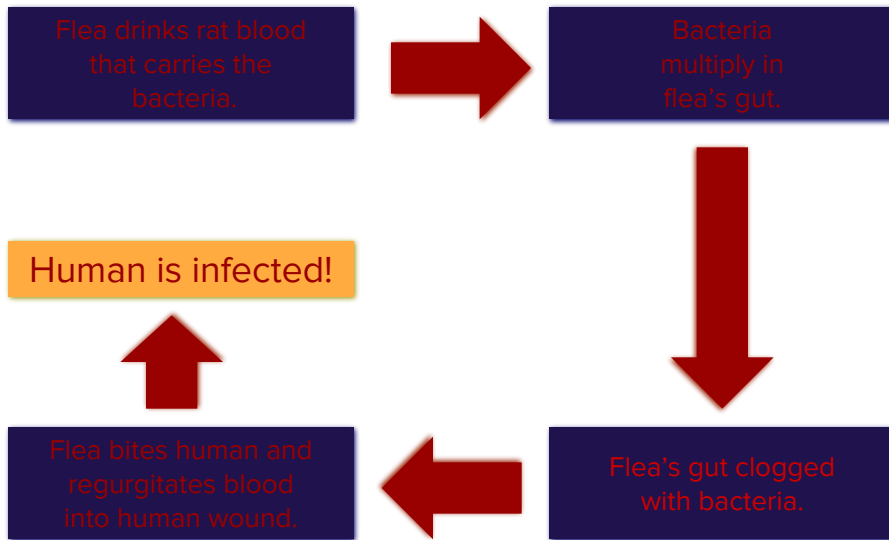
<https://www.youtube.com/watch?v=rZy6XiXDZQ>

The Culprits



<https://www.youtube.com/watch?v=ldZjaT4WXrA>

The Disease Cycle



The Symptoms

Day 1 Painful swellings called buboes appeared in the victim's armpits and groin. These were usually about the size of an egg, but could sometimes be as big as an apple.

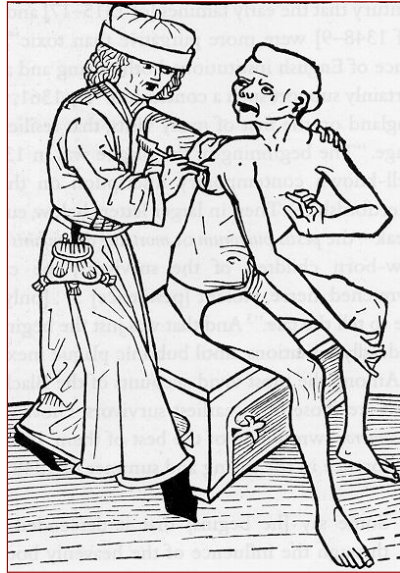
Day 2 The victim vomited and developed a fever.

Day 3 Bleeding under the skin caused dark blotches all over the body.

Day 4 The disease attacked the nervous system. This caused the victim to suffer spasms. The victim was in terrible pain.

Day 5 Sometimes the buboes burst and a foul-smelling black liquid oozed from the open boils. When this happened the victim usually lived. However, in most cases the victim suffered a painful death.

Lancing a Buboe



<https://www.youtube.com/watch?v=AjFvQGQNM5Y>

The Path of the Plague

The progress of the plague coincides with the medieval trade routes



The Black Death

By the early 1300's, more goods were being shipped across central Asia than ever before. This made it possible for the Black Death to spread so rapidly, as caravans infested with rats carried the plague from city to city.



Attempts to Stop the Plague



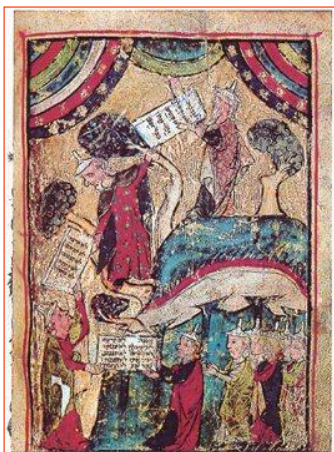
Attempts to Stop the Plague



Flagellanti:

Self-inflicted “penance” for our sins!

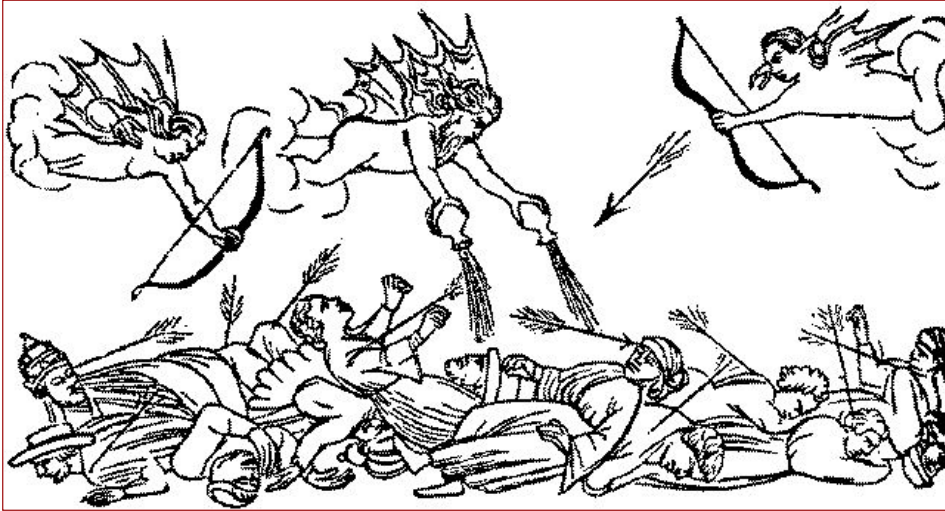
Anti-Semitism



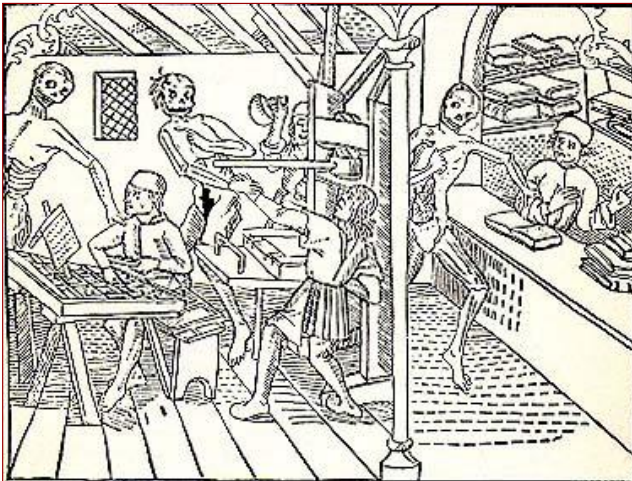
Pogroms against the Jews



Medieval Art



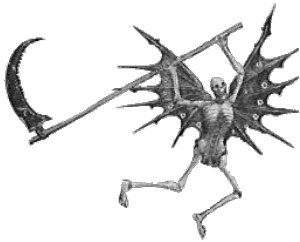
The Danse Macabre



Death Triumphant



Medieval Art



An obsession
with death.



Consequences for Population



- It is estimated that 25-33% of the total European population was killed by the Black Death
- More than 20 million people died!

Economic Consequences



- Shortage of laborers →
 rising wages for peasants and artisans
- Valuable artisan skills disappeared
- Oversupply of goods → prices dropped
- For the living, standard of living rose!

Religious Consequences

- Persecutions of the Jews – scapegoats
- Massacres and burnings
- By 1351, 60 major and 150 smaller Jewish communities had been exterminated
- Lepers were also targeted
- Jews expelled, moved to Poland & Lithuania



Religious Consequences

- Church lost prestige, spiritual authority, leadership
- Promised cures, treatment, and explanations
- No answers to the people
- Revolt against the church
- Severe shortage of clergy – functioned as nurses and consequently died.



Social Effects: Family

Loss of family members could be devastating

Sickness was often long and painful, while family members watched

Family name could not be carried on in many cases

Social Effects: Communities

Serfs were free to leave their land and seek higher wages

The power of the church was weakened

There was persecution of minority groups as scapegoats

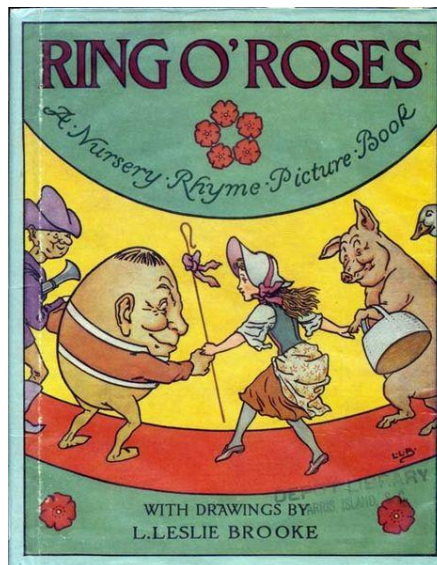
Social Effects: Countries

Many courts and legislatures were abandoned

The 100 years war was postponed due to the high number of deaths

Art changed to reflect the effects of the plague

The Children



And Now?

- The bubonic Plague still exists
- Quite common among rodent populations
- A cure is known today – but the disease moves very quickly
- The Plague is still with us



Hythe Ossuary, remains of victims of the Black Death